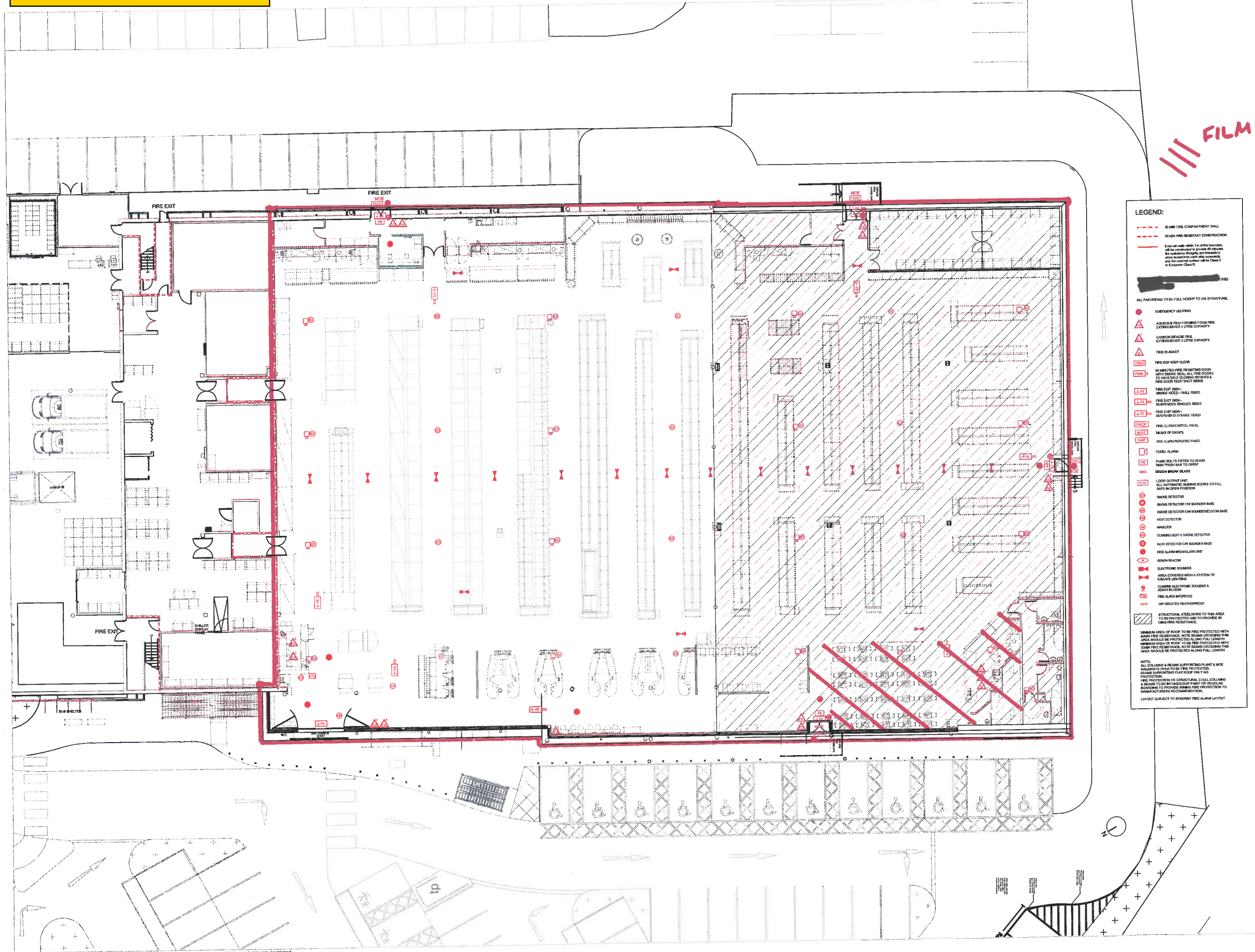


THIS DRAWING HAS BEEN PREPARED FROM WAITROSE LIFECHEMISTS DRAWING NO. 056100157-0102-03-04-DATED 15.03.24 AND IS A FIRE STRATEGY DRAWING. NO. 056100157-0102-03-04 IS NOT A REVISED DRAWING.



LEGEND:

- 60 MIN FIRE COMPARTMENT WALL
- 30 MIN FIRE RESISTANT CONSTRUCTION
- Escape route walls within 1m of the boundary will be constructed to provide 60 minutes fire resistance (height and structure) when loaded from both sides upwards, and the external surface will be Class 0 or European Class B.
- THIS
- ALL PARTITIONS TO BE FULL HEIGHT TO US STRUCTURE
- EMERGENCY LIGHTING
- ▲ AQUEOUS FOAM EXTINGUISHING FOAM FIRE EXTINGUISHER 1 LITRE CAPACITY
- ▲ CARBON DIOXIDE FIRE EXTINGUISHER 2 LITRE CAPACITY
- ▲ FIRE BLANKET
- ▲ FIRE EXIT KEEP CLEAR
- ▲ 60 MINUTES FIRE RESISTANT DOOR WITH TRENCH SEAL, ALL FIRE DOORS TO HAVE SELF-CLOSING DEVICES & FIRE DOOR KEEP 10 FT OPEN
- ▲ FIRE EXIT SIGN - SINGLE SIDED - WALL MOUNTED
- ▲ FIRE EXIT SIGN - DOUBLE SIDED - DOUBLE SIDED
- ▲ FIRE EXIT SIGN - DOUBLE SIDED - DOUBLE SIDED
- ▲ FIRE ALARM CONTROL PANEL
- ▲ MANUAL ALARM
- ▲ FIRE ALARM REPEATERS PANEL
- ▲ VOXEL ALARM
- ▲ PUSH BUTTON FITTED TO DOOR FROM 'FRESH AIR' TO OPEN
- ▲ GREEN BREAK GLASS
- ▲ LOOP OUTPUT UNIT
- ▲ ALL AUTOMATIC CLOSING DOORS TO FAIL SAFE IN OPEN POSITION
- ▲ SMOKE DETECTOR
- ▲ SMOKE DETECTOR CW BOUNDED BASE
- ▲ SMOKE DETECTOR CW BOUNDED/SCAN BASE
- ▲ HEAT DETECTOR
- ▲ HANDBOOK
- ▲ COMBIO HEAT & SMOKE DETECTOR
- ▲ HEAT DETECTOR CW BOUNDED BASE
- ▲ FIRE ALARM BREAK GLASS UNIT
- ▲ JENKIN BEACON
- ▲ ELECTRONIC BOUNDER
- ▲ AREA COVERED WITH A SYSTEM OF ESCAPE LIGHTING
- ▲ COMBIO ELECTRONIC BOUNDER & JENKIN BEACON
- ▲ FIRE ALARM INTERFACE
- ▲ 'IMP' DESIGNATED HEATHPROOF
- ▲ STRUCTURAL STEELWORK TO THIS AREA TO BE PROTECTED AND TO PROVIDE 60 MINS FIRE RESISTANCE.

▲ MINIMUM AREA OF ROOF TO BE FIRE PROTECTED WITH 60 MIN FIRE RESISTANCE. NOTE BEAMS CROSSING THIS AREA SHOULD BE PROTECTED ALONG FULL LENGTH.

▲ MINIMUM AREA OF ROOF TO BE FIRE PROTECTED WITH 30 MIN FIRE RESISTANCE. NOTE BEAMS CROSSING THIS AREA SHOULD BE PROTECTED ALONG FULL LENGTH.

NOTE: ALL COLUMNS & BEAMS SUPPORTING PLANT & MORE WINDWAYS OVER TO BE FIRE PROTECTED. BEAMS SUPPORTING FLAT ROOF ONLY NO PROTECTION. FIRE PROTECTION TO STRUCTURAL STEEL COLUMNS & BEAMS TO BE INTUMESCENT PAINT OR VERTICAL BOARDING TO PROVIDE 60 MIN FIRE PROTECTION TO MAINWORKERS RECOMMENDATION.

LAYOUT SUBJECT TO SYNERGY FIRE ALARM LAYOUT

FILMS

LICENSEABLE ACTIVITIES

THE COPYRIGHT OF THIS DRAWING OR PART THEREOF BELONGS TO BAMBER & REDDIN ARCHITECTS LTD. CONTRACTOR TO CHECK ALL DIMENSIONS PRIOR TO COMMENCING WORK - DO NOT SCALE.